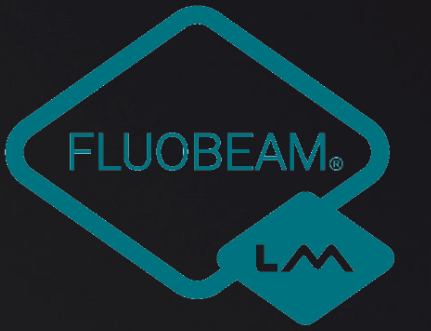


FLUOPTICS®



Introducing
FLUOBEAM® LM



Product - Description

Product - Positioning

FLUOSOFT™ LM – Features

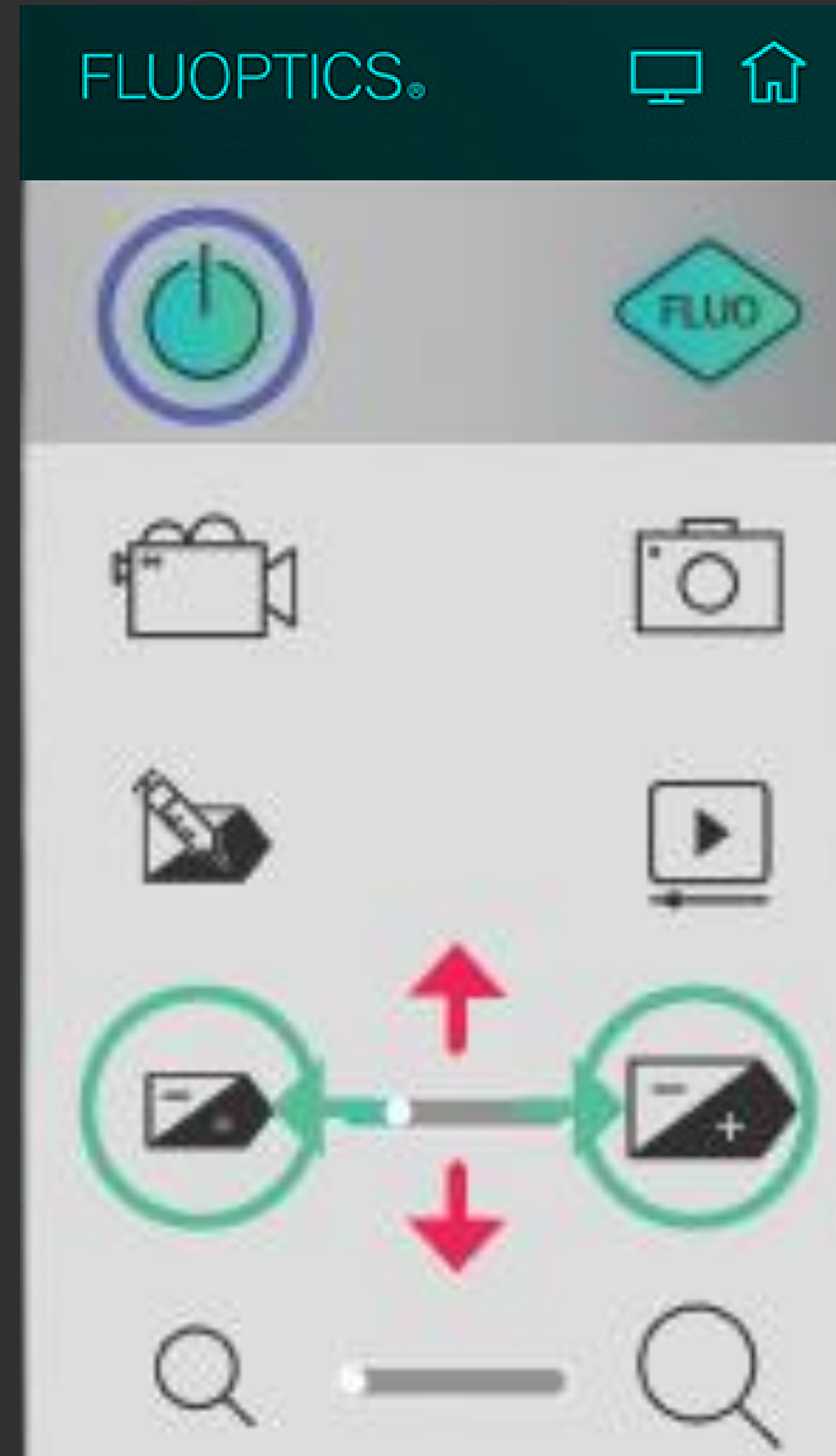
ERGONOMICS & DESIGN

- ❑ -200 grams (smaller and lighter)
- ❑ User Friendly
 - > Joystick to access all functionalities of the software with a flick of a finger
- ❑ Easier to handle (suitable for all hand sizes)



Product Feature's access

The Joystick allows to quickly switch ON or OFF the device, to navigate into the software menu (up and down) and to select an action to perform (right and left).



HOMOGENEITY OF THE LASER EXCITATION

- ❑ 1 unique class 1 laser source
- ❑ Use of the entire image area
> Enhanced fluorescence image homogeneity

INCREASED CAMERA SENSITIVITY

- ❑ Improved visualization of fluorescent signals
- ❑ Reduced sensitivity to ambient light



FLUOSOFT™ LM – Features

Working distance: 12 to 25 cm

FLUOSOFT™ LM Advanced Mode

Identify Sentinel Lymph Node in breast cancer or melanoma.

Identify functional lymphatic vessels before lymphatico-venous anastomosis.



- Camera / Laser
- Data acquisition
- Zoom
- Sensitivity
- Background light
- Video replay

Working distance : 12 to 25 cm

FLUOSOFT™ LM

Relative_Q Mode

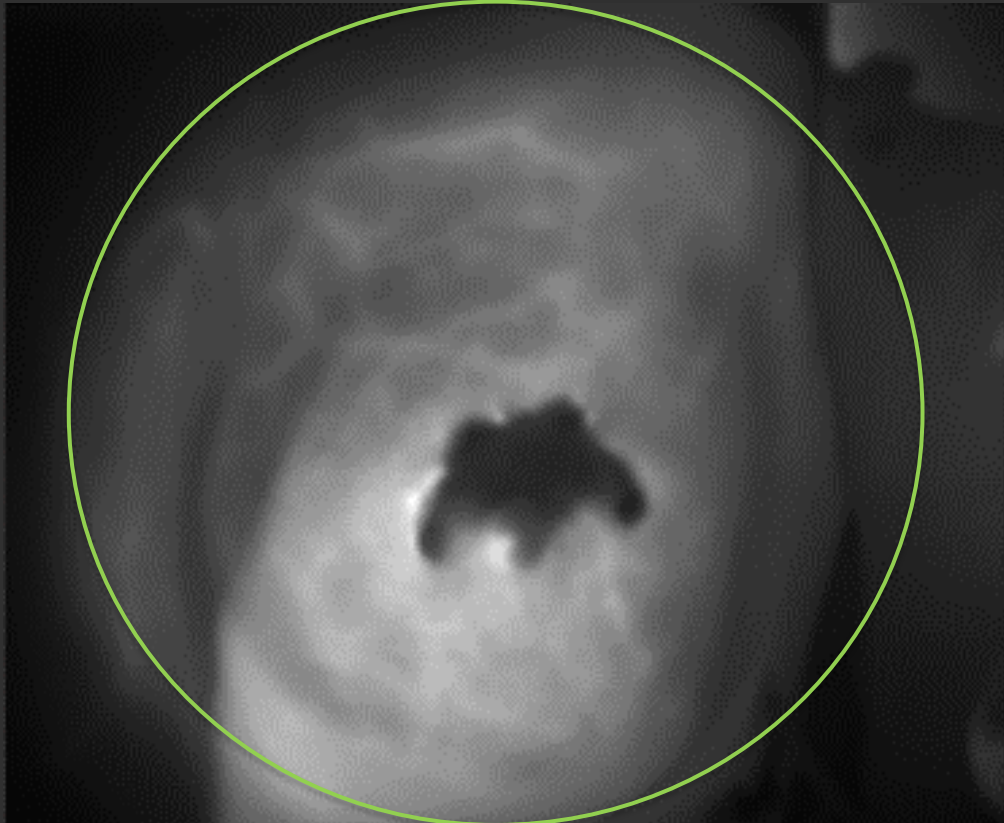
Perfusion assessment :

- Free flap designing
- Vascular anastomoses
- Post operative surveillance to anticipate necrosis



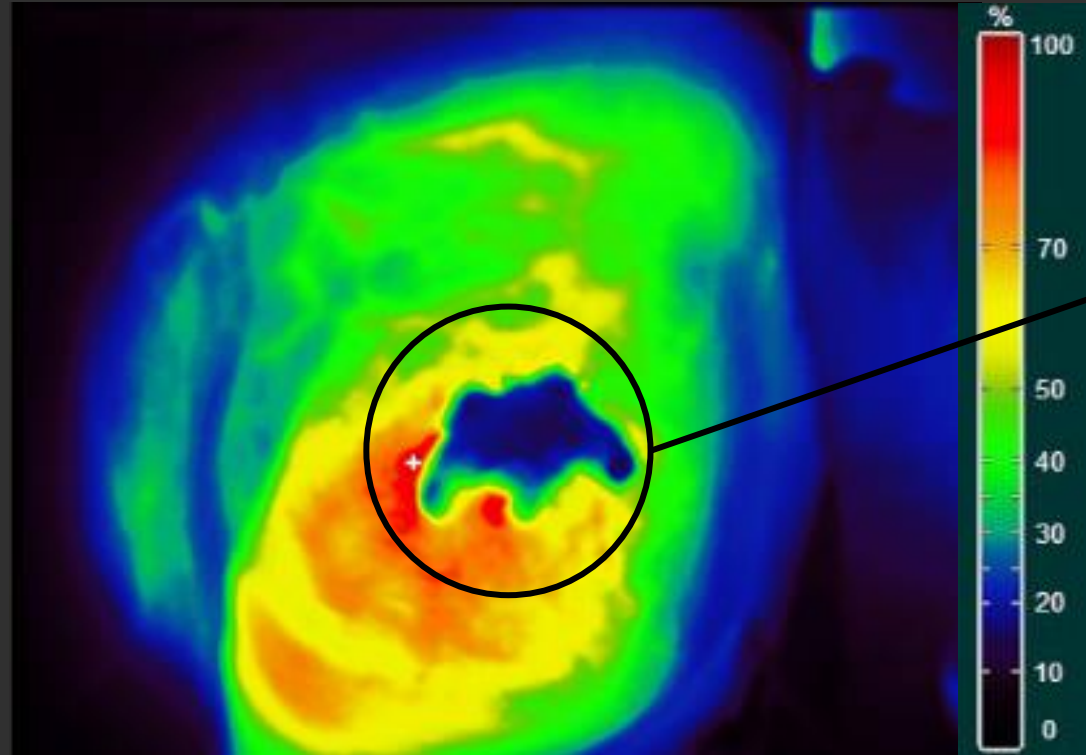
- Camera / Laser
- Data acquisition
- Video replay
- Zoom
- Sensitivity
- Background light
- Relative Quantification

FLUOSOFT™ LM
Relative_Q Mode



Relative quantification

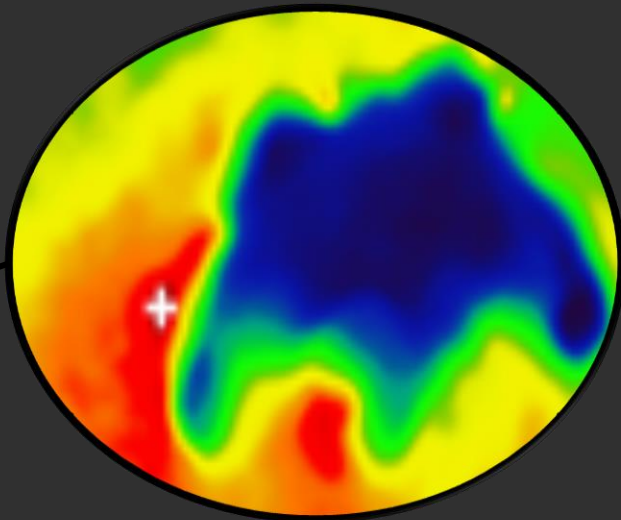
Place the area of interest in the green circle



Result



Start a relative quantification



The white cross indicates the reference (100%)



Show / Hide the last result

Working distance : 12 to 25 cm

FLUOSOFT™ LM Mapping_Q Mode

Perforators localization with
ICG injection



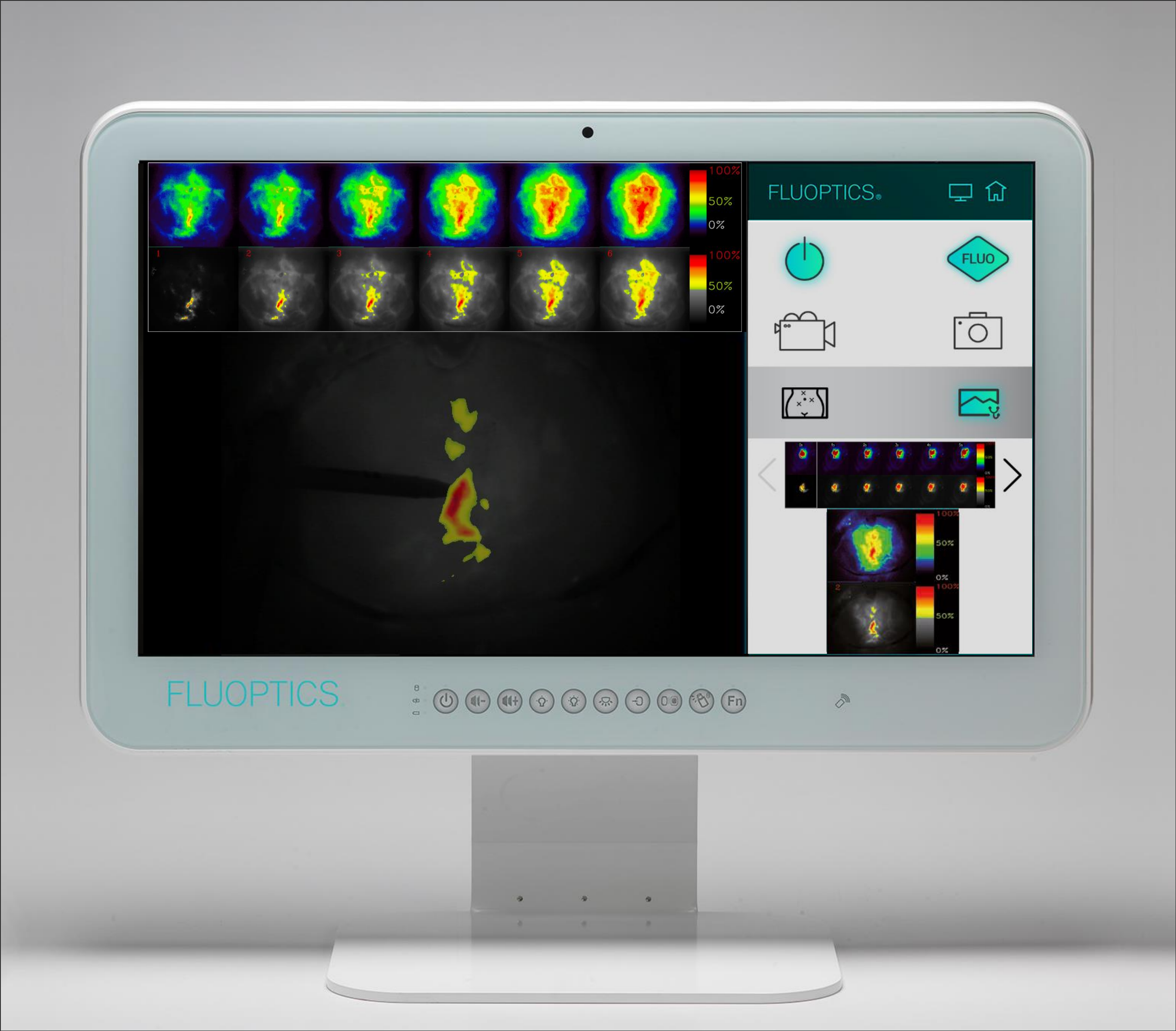
- Camera / Laser
- Data acquisition
- Mapping
- Sensitivity
- Background light
- Relative Quantification

Result

FLUOSOFT™ LM
Mapping_Q Mode

Line #1: Visualization of the fluorescent signal rise.

Line #2: Image processing to identify the fastest and brightest signals. Results are displayed over the real time image for the surgeon to easily mark the signals on the patient.



Working distance : 12 to 25 cm

FLUOSOFT™ LM Panoramic Mode

Get a view of the whole limb to visualize the lymphodema's evolution and identify functional lymphatic vessels.



- Camera / Laser
- Data acquisition
- Sensitivity
- Background light
- Panoramic creation

Panoramic creation



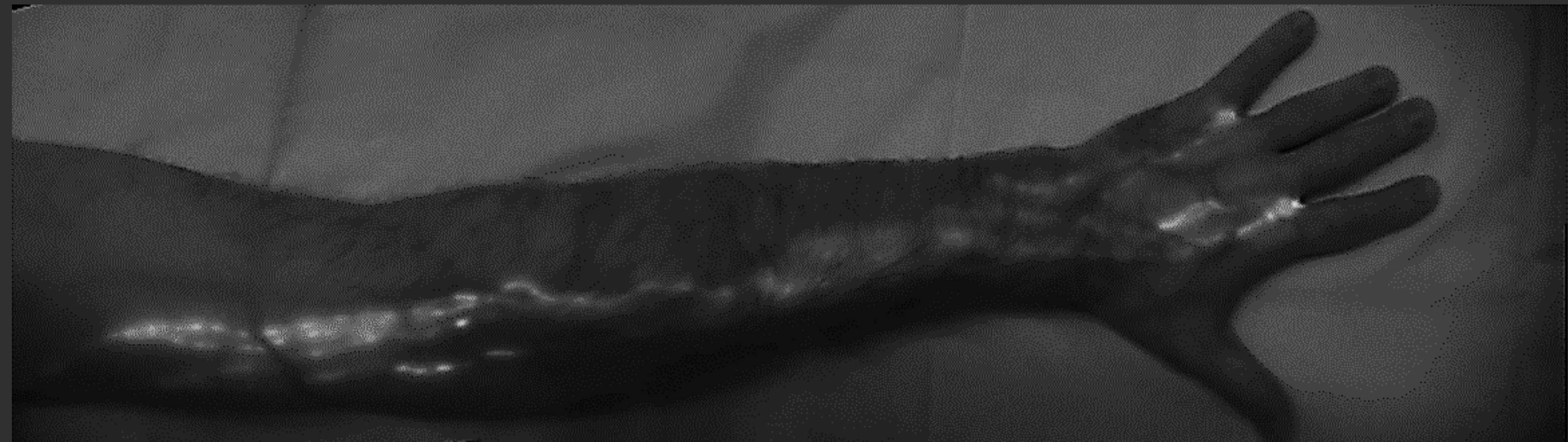
Start the creation of a panoramic



Show / Hide the last panoramic

FLUOSOFT™ LM Panoramic Mode

Result



FLUOSOFT™ LM Hospital connection

New software allowing connection between the system and the hospital database
- Data transfer in DICOM



FLUOPTICS®

Introducing

FLUOBEAM® LM

Designed with enhanced performances
considered as the next generation of
FLUOBEAM®



FLUOPTICS®



**THANK YOU
FOR YOUR ATTENTION**

www.fluoptics.com